

Models "30", "30P",
"300", "30P" and
"500" (Revised)
Features
(Serial No. B50000-)



30

30

PAPER
CATALOG



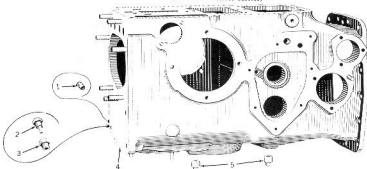
30

30

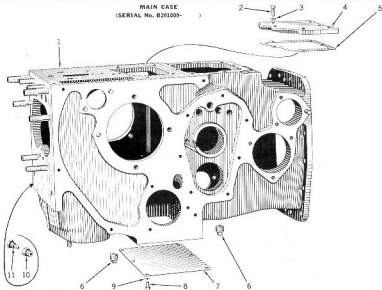
and more models. Please visit
P&H

www.pandh.com

MAIN CASE
(SERIAL No. B20300-B28099)

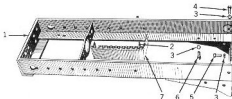


MAIN CASE
(SERIAL No. B201009-)



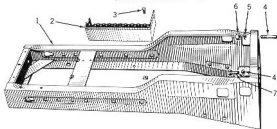
FRONT END SUPPORT AND TOOL BOX

(SERIAL No. B6000-B20000)

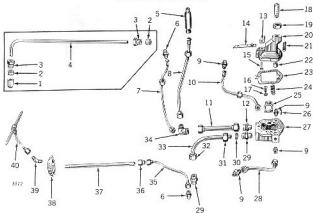


FRONT END SUPPORT AND TOOL BOX

(SERIAL No. B201000-)

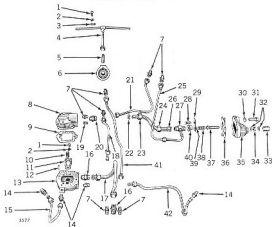


OIL FILTER HEAD, PIPES AND FITTINGS
(SERIAL No. B58810-B209393)

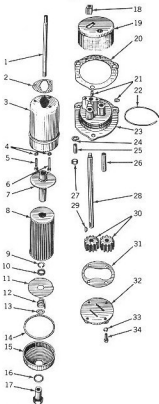


OIL FILTER HEAD, PIPES AND FITTINGS

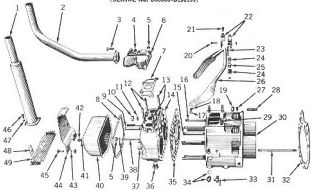
(SERIAL No. B201000-)



OIL FILTER BODY AND PUMP

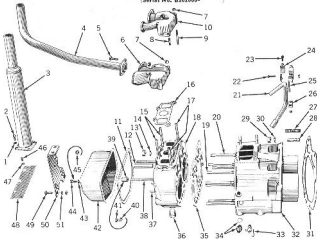


CYLINDER BLOCK, HEAD AND ASSOCIATED PARTS
(SERIAL No. B40000-B226559)



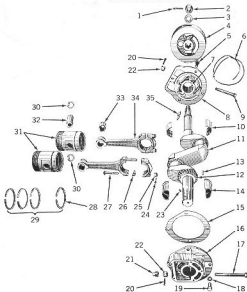
CYLINDER BLOCK, HEAD AND ASSOCIATED PARTS

(Serial No. B201000-)



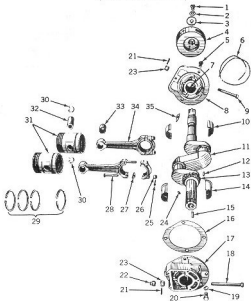
CRANKSHAFT, PISTONS AND ASSOCIATED PARTS

(SERIAL No. B04000-B200000)

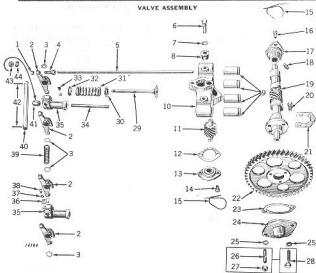


CRANKSHAFT, PISTONS AND ASSOCIATED PARTS

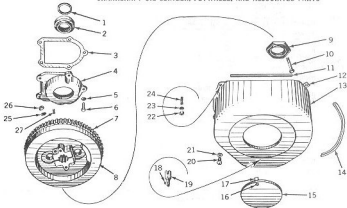
(SERIAL No. R201000-)



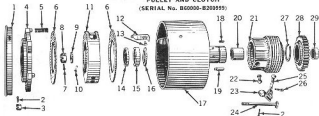
VALVE ASSEMBLY



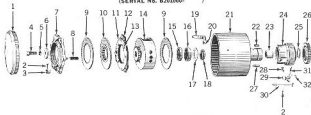
CRANKSHAFT OIL SLINGER, FLYWHEEL, AND ASSOCIATED PARTS



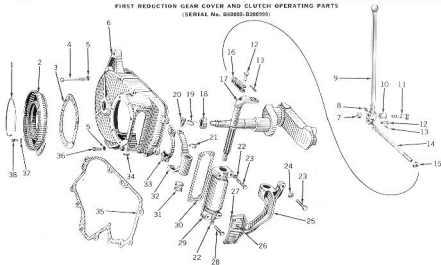
PULLEY AND CLUTCH
(SERIAL No. B60000-B200999)



PULLEY AND CLUTCH
(SERIAL No. B200000-)

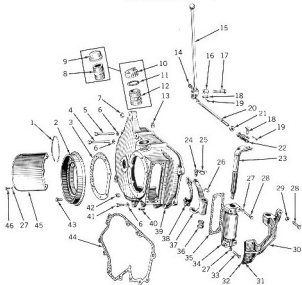


FIRST REDUCTION GEAR COVER AND CLUTCH OPERATING PARTS
(SERIAL No. 869889-0300000)

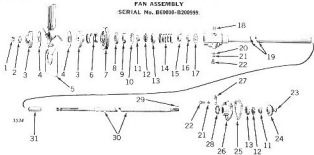


FIRST REDUCTION GEAR COVER AND CLUTCH OPERATING PARTS

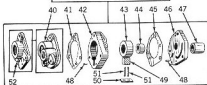
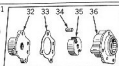
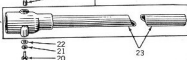
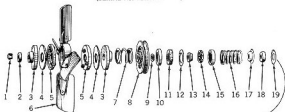
(SERIAL No. 829400-)



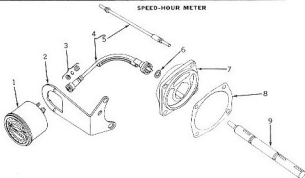
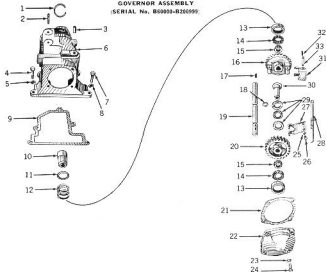
FAN ASSEMBLY
 SERIAL No. B6M33-200595



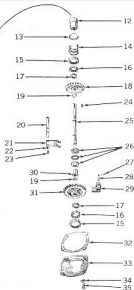
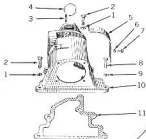
FAN ASSEMBLY AND VENTILATOR PUMP (SERIAL No. B21000-)



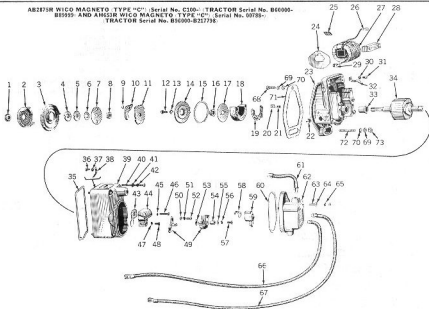
SPEED-HOUR METER

GOVERNOR ASSEMBLY
(SERIAL No. B00000-B100000)

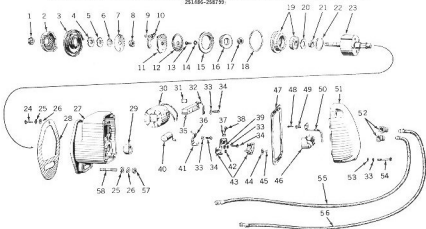
GOVERNOR ASSEMBLY
(SERIAL No. 833180-)



AB275R WICO MAGNETO, TYPE "C", (Serial No. C100-), (TRACTOR Serial No. B60000-
B60499-), AND AN63R WICO MAGNETO, TYPE "C", (Serial No. 60759-),
(TRACTOR Serial No. B60000-B21736).

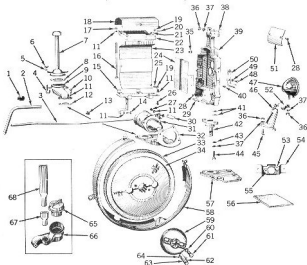


AA2875R WICO MAGNETO (TYPE "X") (Serial No. 253945-1) (SUB. FOR AHC13R, 419938-424934, 250008, 251485, 253880-253945, AND AR1874R WICO MAGNETO (TYPE "X") (SUB. FOR AR2875R, 424825-1, 251885-258739)



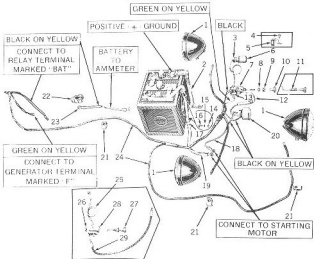
STARTING AND LIGHTING EQUIPMENT

(Serial No. B58460-B59033)

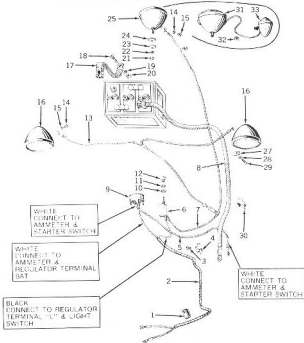


STARTING AND LIGHTING EQUIPMENT

(SERIAL No. B550000-B550000)

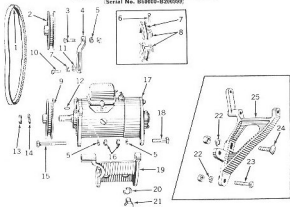


WIRING AND LAMP EQUIPMENT (SERIAL No. B201000-)



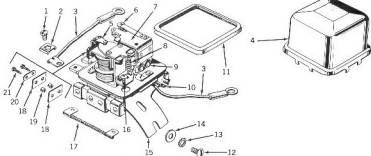
GENERATOR AND GENERATOR MOUNTING

(Serial No. 858600-820000)

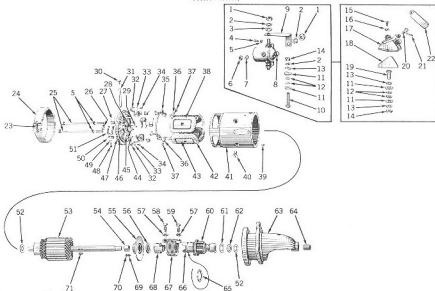


VOLTAGE REGULATORS 111826S AND 111839S

(6-VOLT, FOR AB4000R, AB3503R, AND AD2737R GENERATORS)

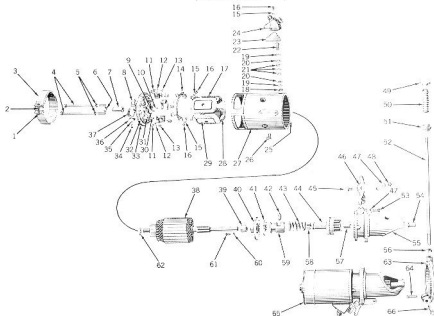


STARTING MOTOR AB1848R AND AB1853R (DELCO-REMY No. 1187434) (TRACTOR SERIAL No. 800000-B16999) AND AB2137R AND AB1853R (DELCO-REMY No. 1187445) (TRACTOR SERIAL No. B16000-B200000)

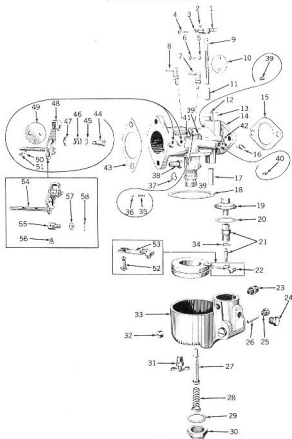


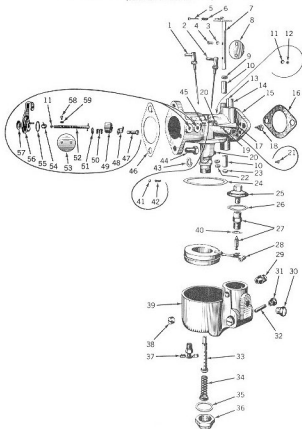
AB3700R AND AB4034R STARTING MOTOR (DELCO-REMY No. 1107542)

(SERIAL No. 8261000-)

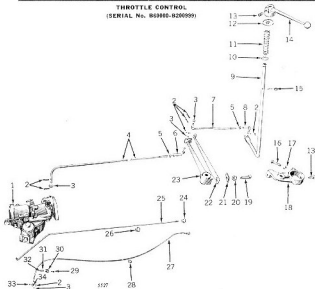


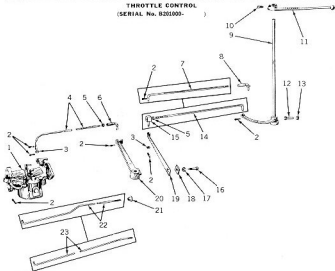
CARBURETORS (SERIAL No. R1000-82H333)



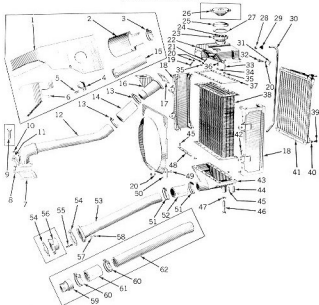
AB3533 (GASOLINE) AND AB3740R (ALL-FUEL) CARBURETORS
 (SERIAL No. B200000-)


THROTTLE CONTROL (SERIAL No. 84985-8200000)



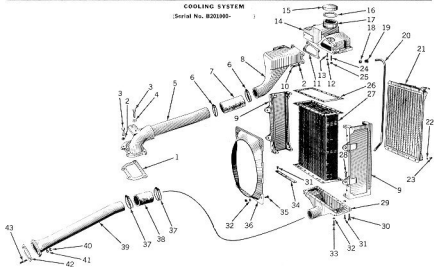
THROTTLE CONTROL
(SERIAL No. 8201000-)

COOLING SYSTEM (SERIAL No. B60000-B300000)



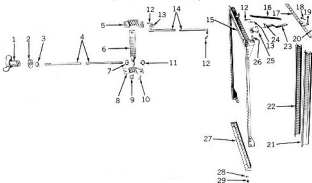
COOLING SYSTEM

(Serial No. B201999-)

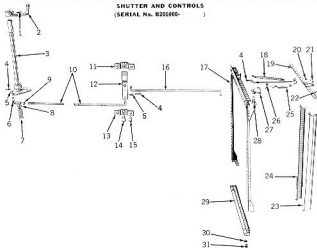


SHUTTER AND CONTROLS

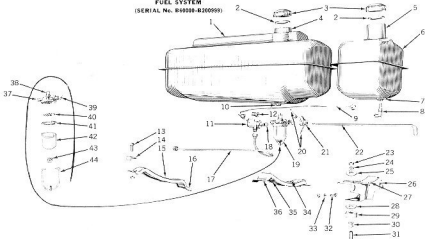
(SERIAL No. B20000-B200999)



SHUTTER AND CONTROLS
(SERIAL No. B250000-)

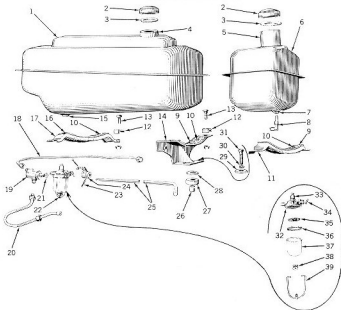


FUEL SYSTEM
(SERIAL No. B40000-B300000)



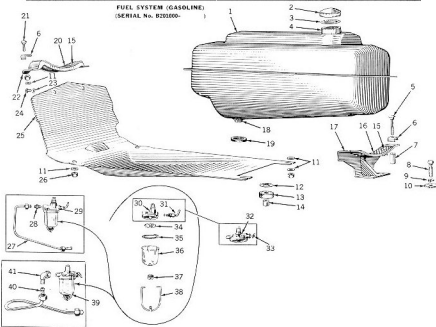
FUEL SYSTEM (ALL-FUEL)

(SERIAL No. B381000-)

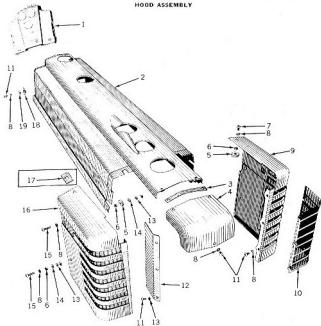


FUEL SYSTEM (GASOLINE)

(SERIAL No. B203000-)

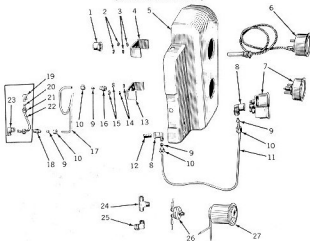


HOOD ASSEMBLY

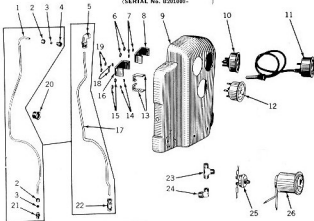


GAUGES AND HOUR METER

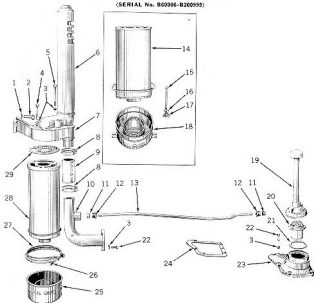
(SERIAL No. B59900-B200000)



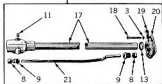
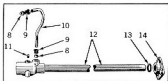
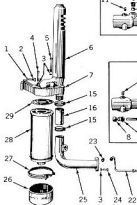
GAUGES (SERIAL No. 0201000-)



AIR CLEANER AND CRANKCASE VENTILATOR
(SERIAL No. 800988-8200955)

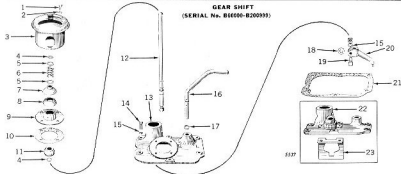


AIR CLEANER AND VENTILATOR PUMP
(SERIAL No. 823180-)



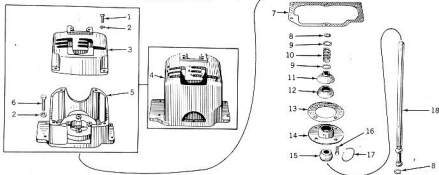
GEAR SHIFT

(SERIAL No. B66000-B200999)

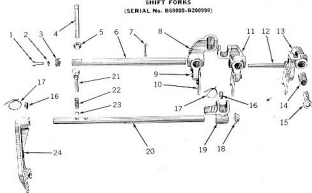


GEAR SHIFT

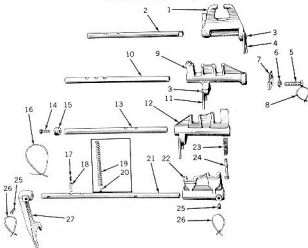
(SERIAL No. B200000-)



SHIFT FORKS
(SERIAL No. 800000-820000)

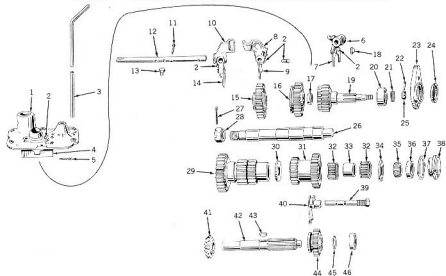


SHIFT FORKS
(SERIAL No. B39000-)



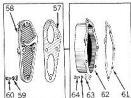
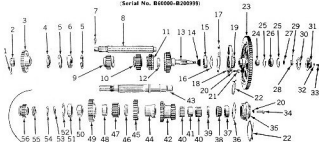
AB1432R (

-B20000) AND AB2546R (B3600-B200000) UNDERDRIVE ASSEMBLIES (SLOW SPEED)

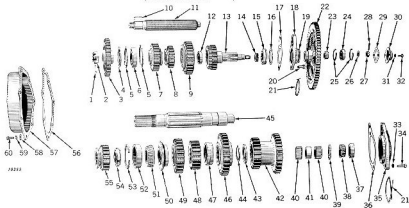


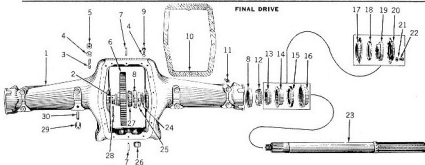
TRANSMISSION

(Serial No. B60000-B200999)



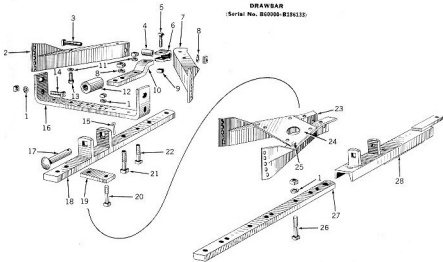
TRANSMISSION
(SERIAL No. B201000-)



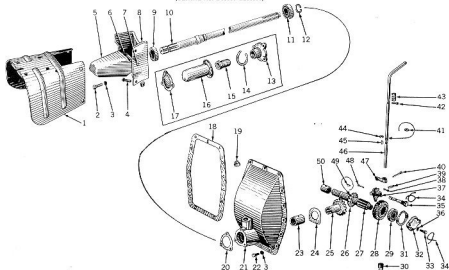


DRAWBAR

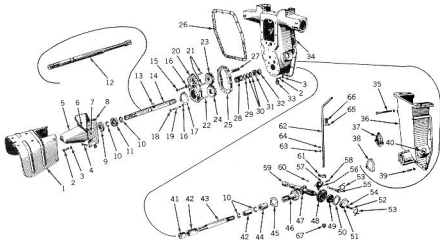
(Serial No. B00000-B10010)



POWER SHAFT
(SERIAL No. B50000-B200999)

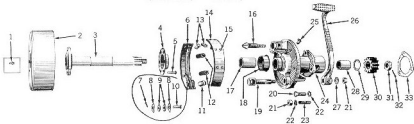


POWER SHAFT
(SERIAL No. R201000-)



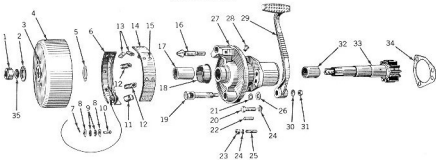
BRAKES

(SERIAL No. (-B232467)

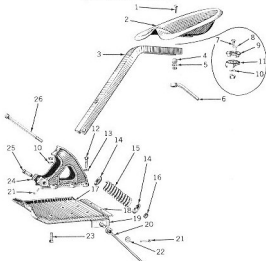


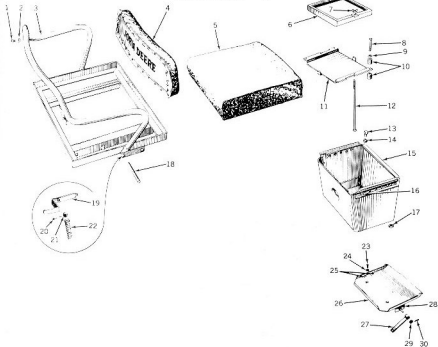
BRAKES
(SERIAL No. B232458-)

1

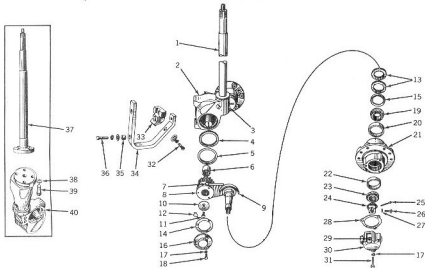


SEAT AND PLATFORM
(SERIAL No. B40880-B200399)



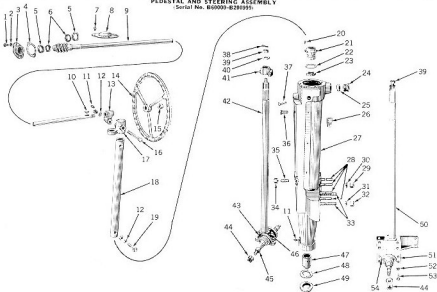
SEAT, BATTERY BOX AND PLATFORM
(SERIAL No. 8281000-)

ROLL-O-MATIC FRONT END ASSEMBLY

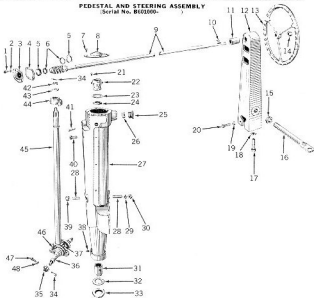


PEDESTAL AND STEERING ASSEMBLY

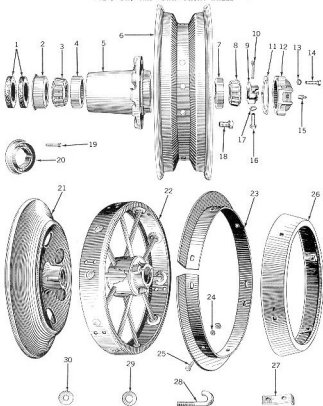
(Serial No. 840000-828000)



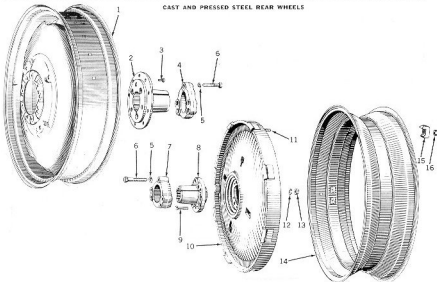
PEDESTAL AND STEERING ASSEMBLY
(Serial No. 8461600-)



"B," "BW," AND "BWH" FRONT WHEEL

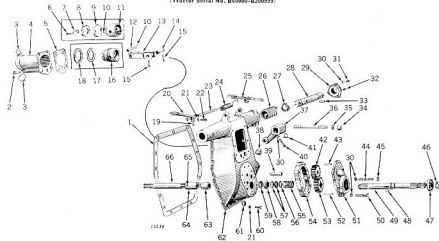


CAST AND PRESSED STEEL REAR WHEELS



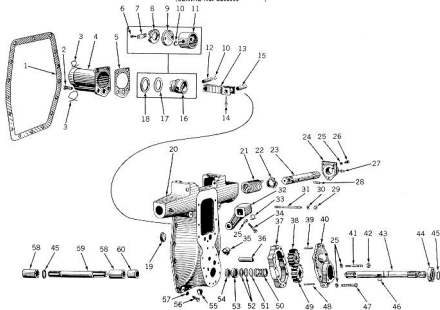
BASIC POWER LIFT (SPECIAL EQUIPMENT)

(Tractor Serial No. B60000-B200000)

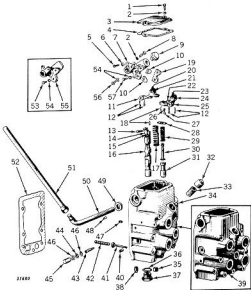


BASIC POWER LIFT (STANDARD EQUIPMENT)

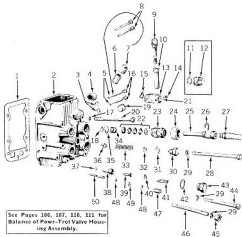
(SERIAL No. B20100-)



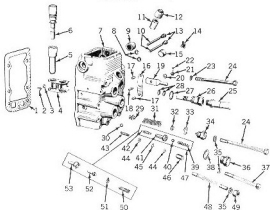
POWER-TROL VALVE HOUSING
PC-8100-PC-82942 or (PCV-100-)



POWER-TROL VALVE HOUSING—Continued
 (PC-B100-PC-B2342) or (PCV-100-PCV-67034)



POWR-TROL VALVE HOUSING—Continued
(PCV-67985-)



LIVE HYDRAULIC PUMP KIT

